

# INSIGHTS



*Hospitality & Tabletop Trends*



# WELCOME

## Editors Note

Welcome to the Spring 2026 Insights Magazine from Churchill, where we explore the restaurant, food and design trends set to shape the hospitality industry in the year ahead.

Inside, you'll find our top food trends for 2026, from the revival of classic bistro dining to cutting-edge immersive restaurant concepts. We also spotlight key colour trend stories, including our perspective on the 2026 Pantone Colour of the Year.

As seasonality and hyper-local sourcing continue to influence menus and dining experiences, we take a closer look at the story behind our iconic Stonecast collection, exploring how its colours work together to complement each season. The magazine concludes with our Tabletop Palettes, demonstrating how mixing and matching tableware can create distinctive looks for every setting.



## CONTENTS

**04-17**

*Food & Restaurant Insights*

**18-25**

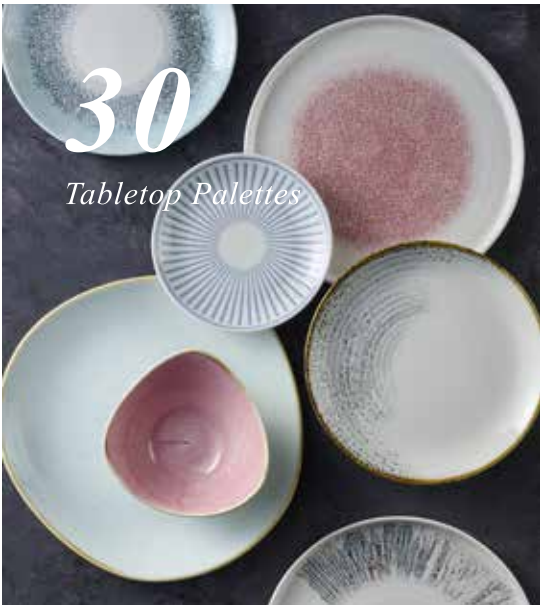
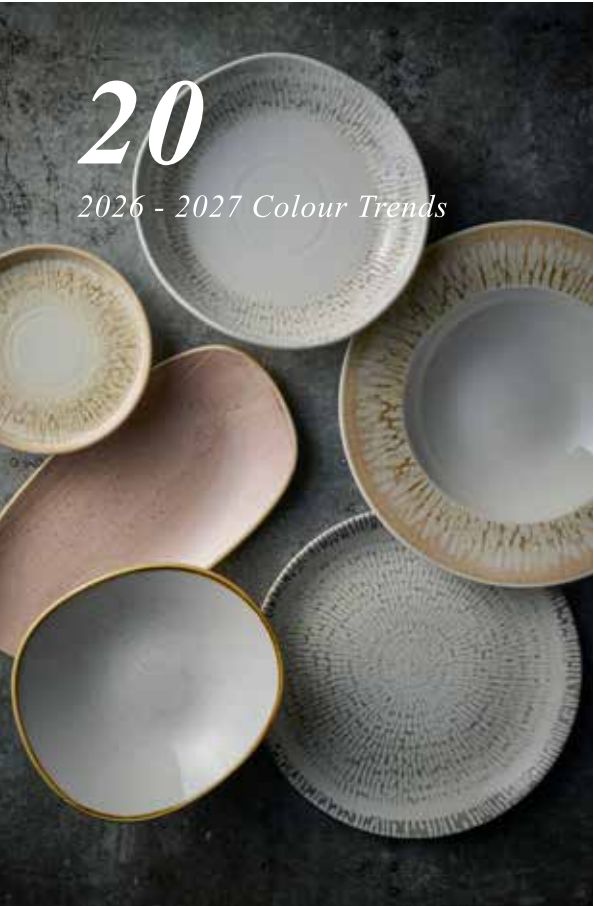
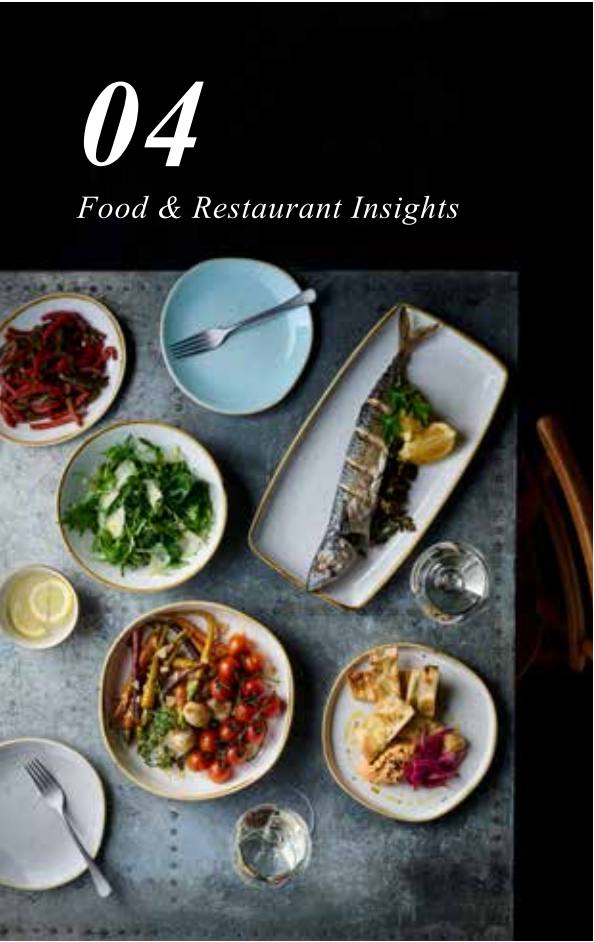
*Stonecast Seasonal Style Edit*

**26-29**

*2026 - 2027 Colour Trends*

**30-31**

*Tabletop Palettes*





# FOOD & RESTAURANT

## Trends 2026

Exploring some of the key trends  
driving innovation this year



### Introducing the prominent food trends we'll be seeing this year in the hospitality industry.

In the global market consumers are continuing to crave comforting and nostalgic experiences, and this means bringing back childhood favourites and heritage dishes. The trend for health and wellness also continues to grow with more purposeful nutrition featuring on menus.

Cuisines dominating 2026 include those from Southeast Asia as well as the Creole, Barbecue and Tex-Mex flavours from the USA.

The classic brasserie is experiencing a comeback with diners seeking out the comfort and sophistication of classic French or British cuisines. Storytelling also remains an important trend, with immersive experiences growing in popularity.



As part of our extensive market research we monitor key trends in the international hospitality sector. This allows us to stay ahead with regards to product design, and is the driving force behind our continuous pipeline of innovation.

Throughout this section of the magazine check out some of the key trendsetting restaurants we've identified.



# NOSTALGIA

REIMAGINED CLASSICS | HERITAGE DINING | CHILDHOOD FAVOURITES | POSITIVE MEMORIES

*A trend that goes deeper than simple 'comfort food', the rise of nostalgia in food and restaurants reflects how deeply people associate food with memories.*

## Childhood Favourites & Heritage Dishes

Nostalgic dining taps into positive memories tied to comfort dishes, childhood favourites and classic regional or cultural foods. Chefs are elevating familiar favourites with better ingredients, modern cooking techniques or innovative presentation. The Nostalgia trend elicits emotions; it resonates because diners seek comfort, stability and connection during uncertain times.



## TRENDSETTERS

### La Riotte - Paris

A modern take on the classic French Bistro, serving heritage dishes.

### Cahoots Postal Office - London

A former railway arch repurposed into a 1940s-style post office bar.

### Disuko - Melbourne

1980s Tokyo disco-inspired restaurant and cocktail bar.

\*Some of the innovative sites we've spotted on our global food research trips, not necessarily Churchill customers, just inspiring and pacesetting restaurants...



Inked Era | White  
Churchill Cutlery | Tanner Vintage



Vintage Prints | Prague Rose Chintz  
Inked Era | Blue & Grey  
Emerge | Oslo Blue



Emerge | Speckled Green



Stonecast Canvas | Coral



Inked Lyra | Blue  
Inked Era | Blue & Grey



Stonecast Hints | Indigo Blue  
Emerge | Oslo Blue  
Churchill Cutlery | Tanner Vintage



Inked Lyra | Blue

## INSIGHTS

Food & Restaurant Insights



INKED ERA  
Grey



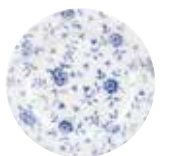
STONECAST CANVAS  
Coral



INKED LYRA  
Blue



INKED ERA  
Blue



VINTAGE PRINTS  
Prague Rose Chintz



STONECAST HINTS  
Indigo Blue



EMERGE  
Speckled Green



INKED LYRA  
Blue





*The Wellness trend is not just about low calories, it's about purposeful nutrition and restaurants are including ingredients that are believed to support specific health goals.*

*Functional Foods*

Wellness reflects a shift in consumer expectations towards foods that don't just taste good, but also supports health, sustainability, and mindful living. As well as plant-forward dishes, menus are also incorporating antioxidants, adaptogens and probiotics.



**TRENDSETTERS**

*Holy Carrot - London*

A creative vegetable-centric cuisine and sustainable ethos.

*Valeda - Barcelona*

Stylish plant-forward tapas with creative small plates.

*House of Greens - Berlin*

A health-food-oriented café and restaurant.

\*Some of the innovative sites we've spotted on our global food research trips, not necessarily Churchill customers, just inspiring and pacesetting restaurants...



Inked Tide Accents | Green



EMERGE | Speckled Green



Opal | White



Studio Prints Homespun Accents | Quartz Black



EMERGE | Oslo Blue & Seattle Grey



Inked Tide | White



Stonecast Raw | Green



Natural | White

**INSIGHTS**  
*Food & Restaurant Insights*



**INKED TIDE ACCENTS**  
Green



**EMERGE**  
Oslo Blue



**INKED TIDE**  
White



**EMERGE**  
Speckled Green



**OPAL**  
White



**STONECAST RAW**  
Green



**STUDIO PRINTS**  
**HOMESPUN ACCENTS**  
Quartz Black



**NATURAL**  
White



# ASIAN FUSION

REGIONAL AUTHENTICITY | FLAVOUR EXPERIENCES | CULTURAL NARRATIVES | STORY DRIVEN

*Asian cuisines remain among the most influential worldwide and chefs are spotlighting specific regional identities such as Filipino, Laotian, Thai and Malaysian.*

## Story Driven Fusion

Diners' growing desire for authentic, deep-rooted flavour experiences means 'fusion' in 2026 isn't random mash-ups; it's "Heritage & Third-Culture Cuisine", where chefs express their own cultural narratives by combining traditions and techniques.



## TRENDSETTERS

**CÉ LA VI - London**  
Restaurant with a contemporary Asian-forward menu.

**Li-Onna - Madrid**  
A popular spot blending high-end Japanese and Mexican flavours.

**Yamada - NYC**  
Michelin-starred Japanese restaurant in Chinatown.

\*Some of the innovative sites we've spotted on our global food research trips, not necessarily Churchill customers, just inspiring and pacesetting restaurants...



EMERGE Melamine | Oslo Blue



Inked Tide | Black



Inked Fresco | Sapphire Blue  
Inked Cascade | Sapphire Blue



EMERGE | Speckled Green & Speckled White



Inked Lyra | Pink



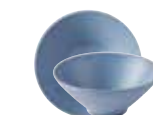
Stonecast | Spiced Orange  
Stonecast Raw | Brown



Natural | White

## INSIGHTS

### Food & Restaurant Insights



**EMERGE MELAMINE**  
Oslo Blue



**INKED TIDE**  
Black



**INKED FRESCO**  
Sapphire Blue



**EMERGE**  
Speckled Green



**INKED LYRA**  
Pink



**STONECAST**  
Spiced Orange



**STONECAST RAW**  
Brown



**NATURAL**  
White



# US SOUL FOOD

HIGH-END STEAK HOUSE | NOSTALGIA & COMFORT | REGIONAL NUANCES | AMERICAN BRUNCH

*On the international restaurant scene American dishes are adapted to local tastes and ingredients, creating interesting cross-cultural expression, such as high-end steakhouses in London or American style brunch in Paris.*

## Story Driven Fusion

Restaurants serving American cuisine internationally are leaning into nostalgia and comfort, which resonates globally. Southern fried chicken, mac & cheese, pot pies, and BBQ brisket are being presented with premium ingredients and elevated plating. Menu storytelling is emphasized with restaurants explaining the origins of dishes or regional nuances such as Memphis vs Texas barbecue styles.



## TRENDSETTERS

### Carbone - London

Iconic NYC restaurant serving red-sauce Italian-American dishes.

### Luke's Oyster Bar & Chop House - Singapore

High-end American seafood and chops.

### HolyBelly - Paris

American breakfast inspiration with high-quality seasonal ingredients.

\*Some of the innovative sites we've spotted on our global food research trips, not necessarily Churchill customers, just inspiring and pacesetting restaurants...



Chefs' Plates | White



Studio Prints Homespun Accents | Quartz Black



Inked Lumé | Midnight Blue



Inked Era | White  
Churchill Cutlery | Tide



Studio Prints Kintsugi | Agate Grey  
Emerge | Seattle Grey



Inked Lumé | Midnight Blue  
Inked Lyra | Pink  
Inked Tide Accents | Green  
Inked Era | White  
Inked Tide | Black  
Inked Cascade | Sapphire Blue



Inked Tide | Gold  
Stonecast | Mustard Seed Yellow

## INSIGHTS

Food & Restaurant Insights



CHEFS' PLATES  
White



STUDIO PRINTS KINTSUGI  
Agate Grey



STUDIO PRINTS  
HOMESPUN ACCENTS  
Quartz Black



INKED LYRA  
Pink



INKED LUMÉ  
Midnight Blue



INKED TIDE  
Black



INKED ERA  
White



INKED TIDE  
Gold





SOPHISTICATED COMFORT | HERITAGE DISHES | TIMELESS CLASSICS | NOSTALGIA

*A revival of the classic bistro and brasserie, combining nostalgic comfort and heritage dishes with contemporary culinary techniques and subtle global influences.*

#### *A Focus On Heritage*

With diners craving comfort and sophistication, The Modern Brasserie trend blends familiar favourites with modern expectations. Menus focus on heritage ingredients, with local and seasonal produce taking centre stage, in dishes such as French classics, British Comfort food or hearty traditional dishes in Spain.



#### TRENDSETTERS

*Dani Brasserie - Madrid*  
A rooftop brasserie from acclaimed chef Dani García.

*Brasserie Constance - London*  
Serving modern British classics and seasonal dishes.

*BRASS - Paris*  
Part of the new wave of restaurants breathing life into the Parisian Bistro.

\*Some of the innovative sites we've spotted on our global food research trips, not necessarily Churchill customers, just inspiring and pacesetting restaurants...



Stonecast Canvas | Coral



Stonecast | Barley White



Inked Elements | Dune



Viana Prints | Charcoal Grey



Inked Lumé | Natural



Inked Lyra | Pink



Inked Era | White



Inked Tide Accents | Green

#### INSIGHTS Food & Restaurant Insights



STONECAST CANVAS  
Coral



INKED LUMÉ  
Natural



INKED LYRA  
Pink



STONECAST  
Barley White



INKED ERA  
White



INKED ELEMENTS  
Dune



INKED TIDE ACCENTS  
Green



VIANA PRINTS  
Charcoal Grey





# THE IMMERSIVE TABLE

MEMORABLE MOMENTS | CREATIVE STORY TELLING | IMMERSIVE SPACES | CULINARY JOURNEYS

*Eating out is becoming a memorable event, where story, creativity, atmosphere and interaction are as important as the food itself.*

## *The Full Experience*

Restaurants are crafting menus and dining experiences that weave a story, whether it reflects a chef's personal journey, celebrates a cultural theme, or unfolds conceptually through each course. The interior design plays an integral role, enhancing the narrative, fostering connection, and creating visually striking moments perfect for social sharing.



## TRENDSETTERS

### *Shelly - Melbourne*

It's a multi-sensory, theatrical experience and 10 course tasting menu.

### *Absurdities - Singapore*

A multi-room, narrative-driven dining concept.

### *Stellar - Paris*

An immersive experience around a galactic-inspired sensory journey.

\*Some of the innovative sites we've spotted on our global food research trips, not necessarily Churchill customers, just inspiring and pacesetting restaurants...



Stonecast Patina | Rust Red



Inked Lumé | Midnight Blue



Inked Cascade | Sapphire Blue



Inked Lyra | Blue & Pink  
Inked Tide | White



Studio Prints Homespun Chroma | Carbon



Studio Prints Fusion | Quartz Black  
Stonecast | Peppercorn Grey & Blueberry  
Studio Prints Astro | Blue



Studio Prints Astro | Blue



Studio Prints Fusion | Quartz Black

## INSIGHTS Food & Restaurant Insights



STONECAST PATINA  
Rust Red



STUDIO PRINTS  
HOMESPUN CHROMA  
Carbon



INKED LUMÉ  
Midnight Blue



STUDIO PRINTS ASTRO  
Blue



INKED CASCADE  
Sapphire Blue



STUDIO PRINTS ASTRO  
Blue



INKED LYRA  
Blue



STUDIO PRINTS FUSION  
Quartz Black



Stonecast®

# THE SEASONAL Edit

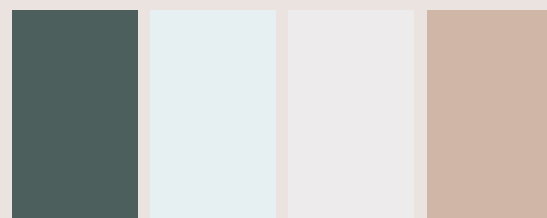
Celebrating Stonecast's Seasonal Style

The iconic Stonecast collection is a symbol of authenticity and quality craftsmanship, with every piece hand-finished and truly unique. Stonecast is a testament to why owning something handmade feels different, because it is different.

Every Stonecast item carries its own story, since every piece is hand-finished and unique. Available in 18 colours inspired by fresh, seasonal ingredients, Stonecast is the ideal choice for creative food presentation. Looking ahead to the seasons of 2026, we celebrate the way Stonecast colours work together to reflect and enhance seasonality.

## Spring MOODBOARD

Celebrate the freshness of Spring with a palette of soft neutrals, gentle blues and delicate off-whites. Mix Barley White, Nutmeg Cream and Duck Egg Blue to create a light airy colour palette that evokes feelings of serenity and new beginnings.



STONECAST Barley White



STONECAST Duck Egg Blue



STONECAST Barley White, Peppercorn Grey & Duck Egg Blue

Light Airy Tones



Seasonal  
Optimism



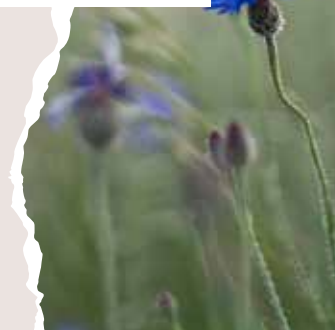
STONECAST Samphire Green

Essence of New Growth



STONECAST Barley White, Sage Green, Samphire Green & Nutmeg Cream

Fresh,  
Soft Palette

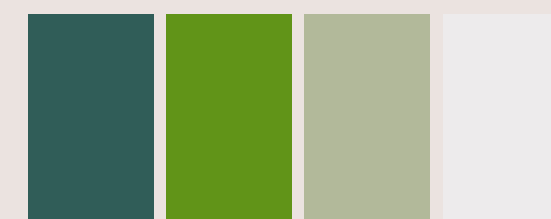


STONECAST Sage Green



## Spring MOODBOARD

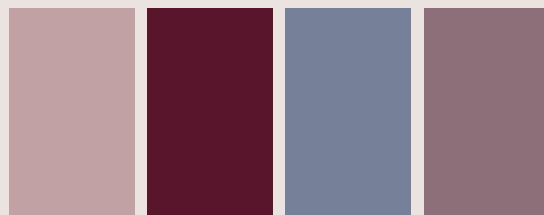
The essence of new growth, fresh green tones mix beautifully with white to celebrate the quiet renewal of Spring. A combination of Samphire Green, Sage Green and Barley White evokes balance, harmony, and the gentle optimism of Spring.





# Summer MOODBOARD

The shades of wildflower fields and fresh summer berries, shades of pink and purple perfectly capture the joy of the warmer months. Combine Stonecast Petal Pink with Lavender for a playful seasonal palette. Relaxed and fun, these soft pastel hues truly capture summer's warmth and ease.



STONECAST Lavender



STONECAST PATINA Deep Purple  
STONECAST Petal Pink & Lavender  
STONECAST ACCENTS Petal Pink



Playful Pastel Shades



STONECAST Petal Pink

Whimsical  
& Fun



Colourful Contrasts

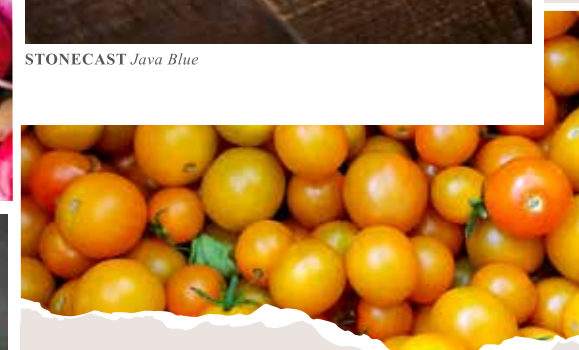


STONECAST Java Blue



STONECAST Java Blue, Mustard Seed Yellow, Cornflower Blue & Spiced Orange  
STONECAST ACCENTS Blueberry

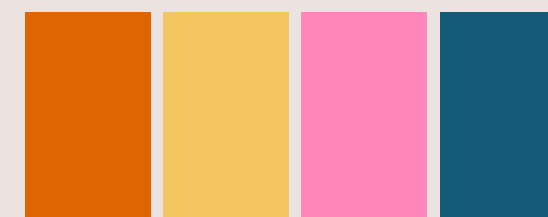
Vibrant  
& Warm



STONECAST Sorrel Green, Barley White, Petal Pink, Tangerine, Java Blue, Peppercorn Grey, Spiced Orange, Duck Egg Blue, Sage Green, Lavender & Berry Red

# Summer MOODBOARD

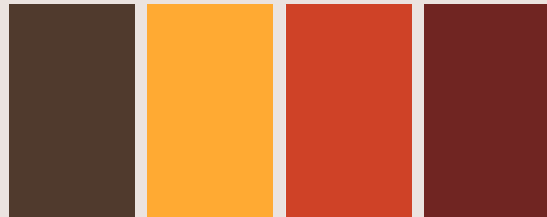
Vibrant shades of yellows, oranges, pinks and blues capture the energy of summer. Create a captivating colour contrast on the table with a mix of Spiced Orange, Mustard Seed Yellow, Petal Pink and Java Blue. This colourful combination evokes the warmth, vibrancy and fun of long summer days.





# Autumn MOODBOARD

Combining the warm colours of Spiced Orange and Mustard Seed Yellow with the earthy Truffle tone creates a cosy Autumnal palette.



STONECAST Mustard Seed Yellow



*Harvest Inspired Hues*



STONECAST Spiced Orange



STONECAST Spiced Orange  
& STONECAST RAW Brown

*Golden Seasonal Tones*

*Earthy Handmade Texture*



STONECAST Sorrel Green



*Natures Harvest*



STONECAST Truffle, Nutmeg Cream & Barley White

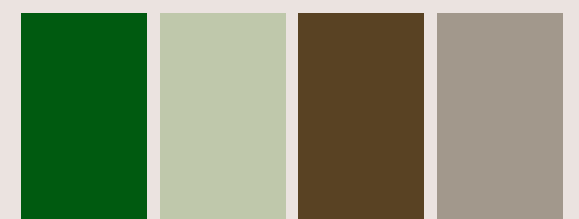


STONECAST Samphire Green & Nutmeg Cream



# Autumn MOODBOARD

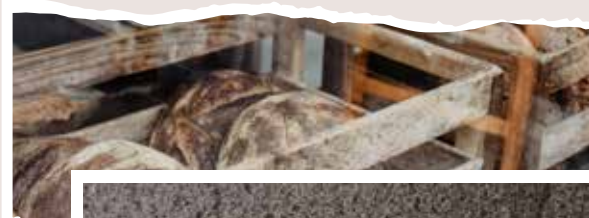
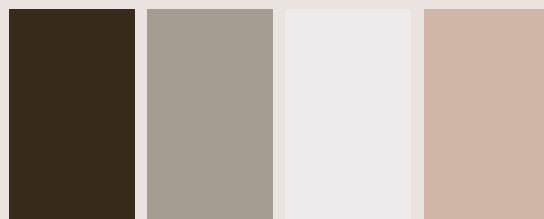
An alternative Autumnal look can be created with earthy and natural tones like Sorrel Green, Sage Green, Nutmeg Cream and Truffle.





# Winter MOODBOARD

Embrace the quiet elegance of winter with cool, muted tones that bring a sense of calm and sophistication to the table. Combine neutrals like Barley White and Nutmeg Cream for a soft wintry palette. Perfectly balanced, these colours complement both seasonal ingredients and tableware, enhancing every detail of the dining experience.



STONECAST Nutmeg Cream



STONECAST Barley White & Nutmeg Cream  
STONECAST AQUEOUS Bayou  
STONECAST PATINA Antique Taupe



STONECAST Barley White

*Quiet Shades  
Of Winter*



*Cold,  
Muted  
Tones*



STONECAST Blueberry & Duck Egg Blue

*Dusky Shades  
Of Twilight*



STONECAST Peppercorn Grey  
STONECAST RAW Grey  
STONECAST PLUME Ultramarine

*Atmospheric & Moody*

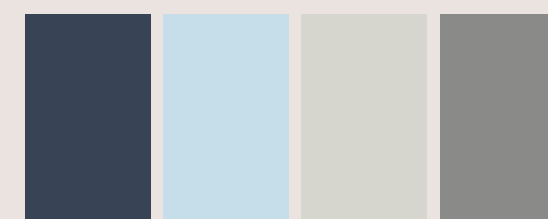


STONECAST Blueberry



# Winter MOODBOARD

A mix of blue shades perfectly capture the quiet stillness of Winter, when daylight hours fade quickly into twilight. Combine dusky blues like Stonecast Blueberry with cool, crisp tones such as Duck Egg Blue and Peppercorn Grey. Echoing the atmospheric mood of Winter, this combination of blues and greys perfectly complements the stillness of the colder months.





# COLOUR STORY 2026:

## Cloud Dancer



*Exploring the trend for simplistic and subtle off-white tones.*

Subtle and understated, white designs such as the new **Elements Ice** are a perfect starting point for creativity. Aligning with the colour trends for 2026, including the Pantone of The Year, a simple off-white shade called **Cloud Dancer**, our new white designs in Inked offer space for layering and experimentation.



Here the simple **Elements Ice** pairs with soft brown and cream tones to create a peaceful palette.



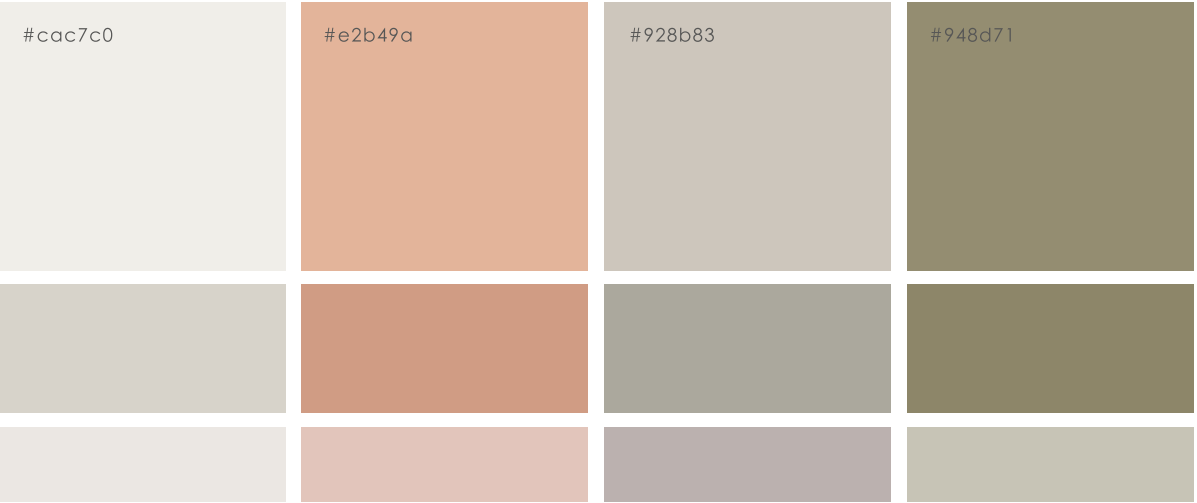
Studio Prints Fusion | Agate Grey, Stonecast Canvas | Coral, Inked Era | Grey, Inked Lyra | Pink, Inked Tide | White, Studio Prints Kintsugi | Agate Grey & Isla | White

Enhance simple off-white designs by pairing with soft pastel pink for a pleasing and whimsical palette.

### *A Soft Tone of Quiet Renewal*

The trend for soft, off-white tones evoke a sense of serenity and optimism - an opportunity for a fresh start and a perfect story for a new year's beginning. Off-white designs in the Churchill portfolio offer an easy and effortless colour base for creating harmonious layers of colour. Think less contrast and more calm.

A perfect canvas for culinary creativity, subtle off-white tones enhance the natural beauty of fresh ingredients and elevate premium plating. Their understated elegance makes them incredibly versatile, seamlessly adapting to a variety of dishes throughout the day, from breakfast spreads to evening à la carte menus.



Layer subtle white tones with blush pinks or earthy greens for a softly natural, organic feel.



# COLOUR STORY 2026:

## Nostalgic Green



*Exploring the trend for warm, comforting green shades.*

The trend for muted greens with warm undertones is inspired by both the natural world and a growing consumer desire for nostalgia.



**Emerge Speckled Green** perfectly complements the **Nostalgic Green** Trend. Pair it with browns and off-whites for an earthy look.



Stonecast Patina | Vintage Copper, Stonecast Canvas | Natural, Inked Tide | Gold, Stonecast | Mustard Seed Yellow, Sorrel Green & Sage Green

Create a warm nature-inspired palette by mixing greens with **Mustard Seed**, **Tide Gold** and **Patina Vintage Copper**.

### *A Palette Grounded in Nature*

Inspired by the enduring influence of the natural world, **Nostalgic Green** brings a sense of warmth, calm, and understated comfort to contemporary design. This softly warmed green feels grounding and familiar, offering a versatile backdrop that reflects a growing desire for soothing, nature led palettes.

Pairing **Nostalgic Green** with warm accents like mustard yellows, rich ochres and dusty oranges is a beautiful way to build an earthy palette. These hues enhance the warmth within the green, forming a cohesive combination reminiscent of sun-lit fields and late-summer landscapes. Introducing an off-white, such as the Pantone Colour of the Year **Cloud Dancer**, provides a visual pause within the palette, softening the overall look and allowing each tone to breathe.



Enhance the warmth in **Nostalgic Green** with earthy browns and oranges. Add an off-white to soften the palette.



# TABLETOP PALETTES

Tabletop Palettes brings together food, interior and colour trends, grounding them in real hospitality market insight.

Our in-house research tracks trends in new restaurant openings and, in 2025, revealed a continued move towards mixing and matching tabletop products, with nearly 70% of venues combining different colours and styles of tableware. The Tabletop Palettes concept is simple: it takes key themes from across the trends and translates them into curated combinations from our ranges, grouped into complementary colour palettes.

Wave Patterns  
**Ultramarine**  
DEEP-SEA DIVE  
COMPELLING  
**FLUID**



BLUES

**PRODUCTS FEATURED:**  
**Blues:** Emerge | Oslo Blue, Studio Prints Homespun Chroma | Marine, Stonecast Plume | Ultramarine, Inked Tide Accents | Blue, Inked Lyra | Blue, Inked Cascade | Sapphire Blue, Studio Prints Astro | Blue & Inked Fresco | Blue.

Minimal  
**NEUTRAL**  
TACTILE  
**Mindful**  
Calming



NEUTRALS

**PRODUCTS FEATURED:**  
**Neutrals:** Studio Prints Stone | Agate Grey, Inked Elements | Dune, Inked Lumé | Natural, Inked Cascade | Taupe, Natural | White, Stonecast | Nutmeg Cream, Stonecast Canvas | Natural, Studio Prints Kintsugi | Agate Grey & Stonecast Spice | Pepper

WILDERNESS  
Green Eden  
**Fresh Foliage**  
MOSS TEXTURES  
Refreshing



BOTANICALS

**PRODUCTS FEATURED:**  
**Botanicals:** Stonecast Raw | Green, Stonecast | Barley White, Inked Elements | Fern, Inked Erosion | Sand, Stonecast | Sage Green & Sorrel Green, Inked Tide Accents | Green, Nourish | Andorra Green, Emerge | Speckled Green, & Stonecast Plume | Olive.

Dramatic Tones  
DARK EARTH  
**Cosmic**  
STATEMENT PIECES  
**Mysterious**



INDUSTRIAL

**PRODUCTS FEATURED:**  
**Industrial:** Studio Prints Fusion | Quartz Black, Nourish | Seattle Grey, Inked Lumé | Midnight Blue, Inked Tide | Black, Alchemy Smoke | Black, Studio Prints Homespun Accents | Quartz Black, Studio Prints Homespun Chroma | Carbon, Stonecast Raw | Black, Studio Prints Kintsugi Accents | Quartz Black & Inked Delta | Grey.

Newstalgia  
RUST TEXTURES  
**Mustard Tones**  
COPPER BROWNS  
Vintage Vibes



RETRO

**PRODUCTS FEATURED:**  
**Retro:** Nourish | Tokyo Black, Inked Era | White, Stonecast Patina | Vintage Copper, Stonecast | Mustard Seed Yellow, Truffle & Java Blue, Studio Prints Kintsugi | Coral.

SOFT TONES  
**Delicate**  
TRANQUIL  
COOL BLUE  
Candy Pink



PASTELS

**PRODUCTS FEATURED:**  
**Pastels:** Studio Prints Fusion | Aquamarine, Studio Prints Raku | Rose Quartz Pink, Inked Era | Blue, Studio Prints Homespun Accents | Jasper Grey, Stonecast | Duck Egg Blue & Petal Pink, Inked Lyra | Pink & Stonecast | Lavender.





churchill1795.com  
f churchill1795  
in churchill1795  
@ @Churchill\_1795

Tel: +44 (0) 1782 577 566  
Fax: +44 (0) 1782 524 355  
email: info@churchill1795.com

**HEAD OFFICE  
& STOKE SHOWROOM**  
No. 1 Marlborough Way  
Tunstall  
Stoke-on-Trent  
ST6 5NZ

**LONDON SHOWROOM**  
Business Design Centre  
Suite 102  
52 Upper Street  
Islington  
London  
N1 0QH

**BERLIN SHOWROOM**  
Rankestraße 8  
10789  
Berlin  
Germany  
Tel: 030 33911110

**MADRID SHOWROOM**  
Calle Princesa No 2  
7ta Planta  
Puertas 4 y 5  
Madrid 28008  
España  
Tel: 910 004 929



In the printing of this brochure, every effort has been made to ensure perfect reproduction of product colours, but due to printing limitations, they may not be an exact match to the actual product.

HULTF261