



CHURCHILL

...BUT FIRST



COFFEE

Over 7 Million items in stock.



Coffee Break 

Freshly Baked 

Lunch & More 

COFFEE SHOP PORTFOLIO

Tabletop Inspiration for Cafè & Coffee Shops

— COFFEE SHOP — PORTFOLIO

Tabletop Inspiration for Cafè & Coffee Shops

As consumers love of speciality coffee, premium tea and brunch continues to grow we turn to the humble local café or coffee shop as a meeting space for all occasions.

In urban areas coffee shops aren't just refreshment pit-stops, they're community spaces for business meetings, freelance workers and society meets.

The café experience is changing and growing along with the way we drink coffee and tea. Innovations in speciality coffee continue as independent roasters and baristas pursue perfection and tea moves from an inexpensive, everyday drink to a premium tippie.

Sustainability is a core topic for the hospitality industry and cafés are leading the way, working collaboratively to reduce waste, promote societal well being and support the local areas.

CONTENTS

INDUSTRY OVERVIEW	04
SPECIALITY COFFEE	06
PREMIUM TEA	10
BREAKFAST & BRUNCH	14
LUNCH BREAK	18
SOMETHING SWEET	22
COUNTERTOP DISPLAY	26

Stoke Showroom

No.1 Marlborough Way,
Tunstall, Stoke-on-Trent,
ST6 5NZ, England

Madrid Showroom

Calle Princesa No 2, 7ta
Planta, Puertas 4 y 5,
Madrid 28008
España

London Showroom

Business Design Centre,
Suite 102, 52 Upper Street,
Islington, London, N1 0QH

Berlin Showroom

Churchill Showroom Berlin
Rankestr. 8
10789 Berlin

+44 (0)1782 577566 | info@churchill1795.com | www.churchill1795.com

f churchill1795 | t @churchill1795 | @churchill_1795



Industry Overview

Café culture has boomed in our cities and town centres, becoming part of our daily routines, social calendars and work lives. The industry continues to evolve with innovation and experience-led concepts.

PLANET FRIENDLY

0.01

Collectively the café industry is working together to reduce its impact on the environment by moving to organic produce, eco-friendly packaging and compostable cups.

LOCAL COMMUNITY

0.02

The local café is a hub of the community, a place for meeting, working and relaxing.

SPECIALITY COFFEE

0.03

Consumers have become coffee connoisseurs and different blends, roasts and brews are revered with the same recognition as wines.

OPERATIONAL EFFICIENCY

0.04

As the market becomes more and more competitive café owners strive for efficiency.

EXPERIENCES

0.05

As consumers seek out experiences instead of material goods, coffee shops and cafés create in-store events and offerings such as tastings, training and community events.



☕

SPECIALITY COFFEE

Consumers have become coffee connoisseurs and the industry is growing with artisan roasters and qualified barristers in stylish coffee shops. More than just a drink, coffee has developed from an

everyday staple necessity to a crafted beverage and artisan experience. The character of coffee itself is explored and appreciated, including the body, acidity, aroma and more.



Items are listed left to right
Monochrome: MOBRSJ4 1, MOBKCB201, MOIBCSS 1, MOBRCB201, MOVCCSS 1, MOBLCB201, MOMBCSS 1

Items are listed left to right
Café: WH CEB91, WH ESS 1, WH CB441, WH CB401, WH CB281, WH CSS 1



Sustainability comes to the forefront of the coffee industry, with movements underway to reduce waste, increase efficiency and eliminate the single use cup.

Items are listed left to right
Plume: PLGRCEB91, PLULESS 1, PLULCEB91, PLGRESS 1



Items are listed left to right
Homespun: SPSGCB201, SPSGCCSS 1



Items are listed left to right
Patina: PABGEVP81, PAATCB201, PAATCSS 1
Bit on the side: BCBRRPD41

"65 percent of coffee consumption is at breakfast"



Items are listed left to right
Studio Prints Raku: RKTBSB151, RKTBSJ4 1, RKTBYM121



Items are listed left to right
Stonecast: SPPSEVP61, SWHSCSS 1, SWHSCB201



Items are listed left to right
Stonecast Patina: PARECB281, PARECSS 1, PARETR9 1, PAREEVP81, PAIBCB281, MOIBCSS 1



Items are listed left to right
Menu Shades: ZCSAPOJ21, ZCSAPOSU1, ZCSAC12 1, ZCSAPOSU1 Agano: AGBLEV111

**COFFEE IS
 THE 2ND
 MOST POPULAR
 DRINK IN THE
 WORLD AFTER
 WATER**

—  —
**PREMIUM
 TEA**

Tea is served as a crafted beverage, hailed with health attributes and seen as a luxury indulgence. The premiumisation of tea sees creative loose leaf blends, botanical and natural flavours or spices

from tumeric, cumin and more. The humble English Breakfast teabag now competes against exotic fusions of quality leaves, served brewed to perfection in stylish cups and teapots.



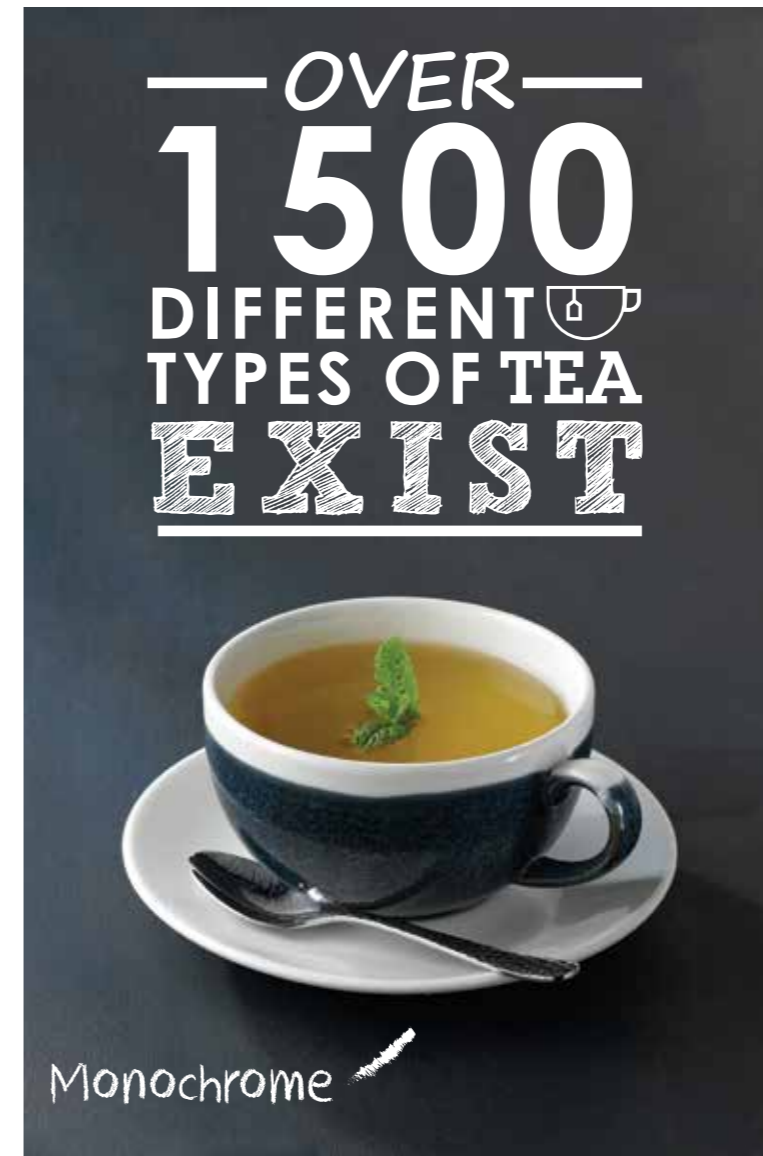
Stonecast

Items are listed left to right
Stonecast: SPPSWO341, SPPSVM121, SPPSCB281, SPPSCSS 1, SSASEVB71

Items are listed left to right
Plume: PLULCB201, PLULCSS 1



Stonecast Plume



Monochrome

Items are listed left to right
Monochrome: MOBLCB281
White: WH CSS 1
Sola Lima Cutlery: 11LIMA302



Stonecast

Items are listed left to right
Stonecast: SDESCSS 1, SPGSCB281, SWHSEVP61, SPGSSJ4 1, SWHSSB151, SPGSCSS 1, SSOSCB281, SPGSSSGR1



Studio Prints Homespun

Items are listed left to right
Homespun: SPCBSSGR1, SPCBSB151, SPGSCB201, SPGSCSS 1
Sola Lima Cutlery: 11LIMA302
Wood: ZCAWOB1 1



Profile



Items are listed left to right
 Profile: WH EB151, SS TF 1
 Bit on the side: WH BSDB1
 Bamboo: WHBABSDB1, WHBABS21
 Buffetscape Wood: ZCAWMWCR1

The Worlds Tea...



Masala Chai

Indian: Black tea with cardamom, milk, brown sugar and spices.

Bubble Tea

Taiwan: Iced tea with powdered milk, syrup and tapioca balls.

Cha Yen

Thailand: Ceylon or Assam iced tea with sugar, condensed milk and star anise.

Afternoon Tea

United Kingdom: Black tea taken with milk and served alongside a selection of small cakes and sandwiches.

Touqreg Tea

Morocco: Green tea with fresh mint and sugar.

Matcha


Japan: Tea leaves ground into powder and whisked into a beverage used in traditional ceremonies.

Sweet Tea

USA: Black tea served over ice with sugar.

Bit on the side

Bamboo

—  —

BREAKFAST & BRUNCH

—

Indulgent weekend brunches or grab and go breakfasts, diners are eating out in the morning almost as often as they eat out for dinner. Busy modern day lifestyles and increased business travel

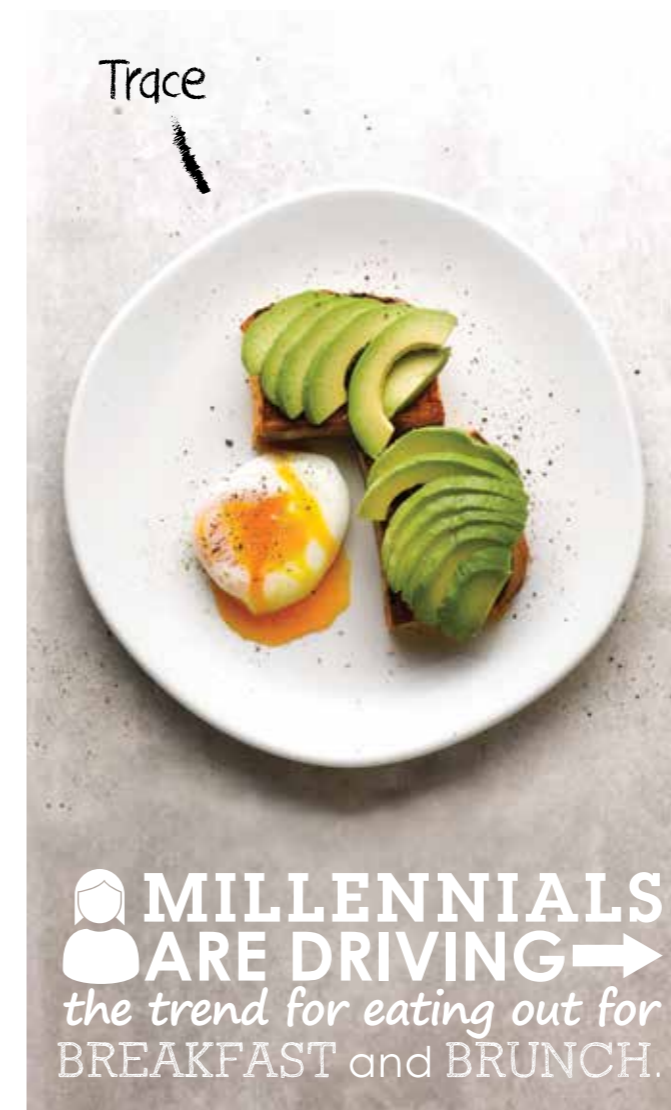
create a necessity for healthy, fresh breakfasts which are quick and convenient. Going out for brunch offers a family friendly alternative to dinner or an indulgent weekend treat with friends.



Items are listed left to right
Stonecast: SDESWP211, SPPSWP261, SSASTRB71, SWHSSJ2 1, NSSDSSDP1, SPGSCSS 1, SPGSCB201, SSASTR101, SSASXO111, SCFSCSS 1, SCFSCB281, NSSWSSCM1



Items are listed left to right
Trace: WH OG101



Items are listed left to right
Stonecast: SPPSXO141

Items are listed left to right
Raku: RKTBCB201, RKTBCSS 1, RKTBSB151



Items are listed left to right
Nourish: RBBLBS141, RBBLBSB91, RBBLBSD21, RBBLBSD41,

"Eating breakfast out of the home has more than doubled in the past few years, with diners opting for healthy on the go breakfasts or indulgent weekend brunches"

Studio Prints Stone



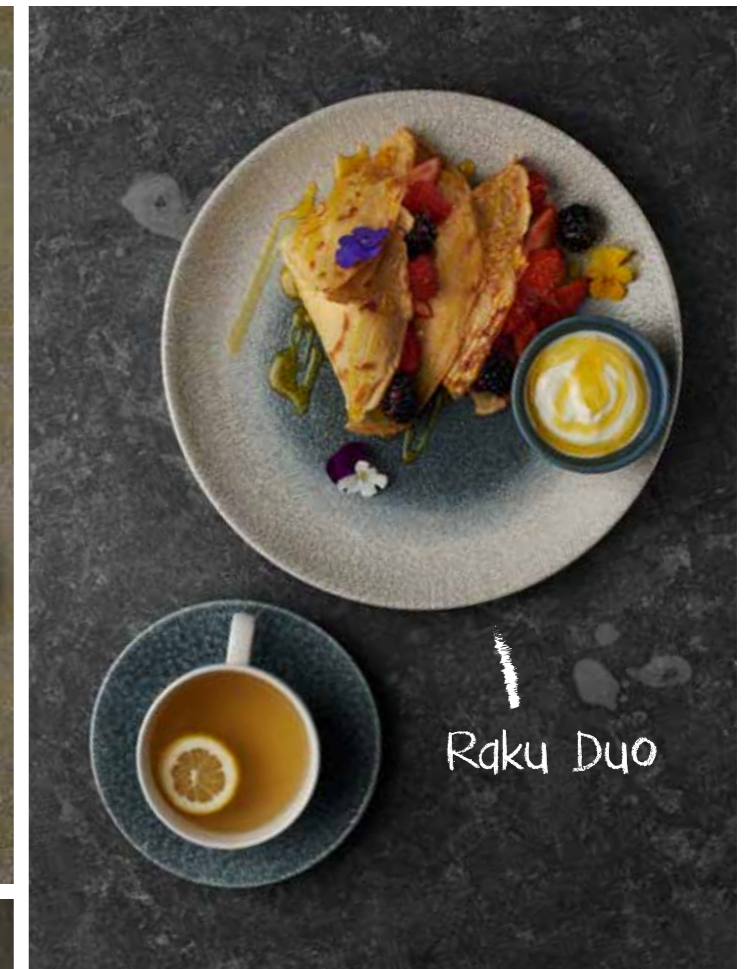
Items are listed left to right
Stone: STAGEVB91

Items are listed left to right
Plume: PLULEVP61, PLULEVP81,
PLGREV101, PLULCB201, PLULCSS 1
Nourish: RBBLBSD21



Stonecast Plume

Items are listed left to right
Studio Prints Raku: RKTBCSS 1, RKTBCB281
Studio Prints Raku Duo: RKATEV111
Nourish: RBBLBSD21



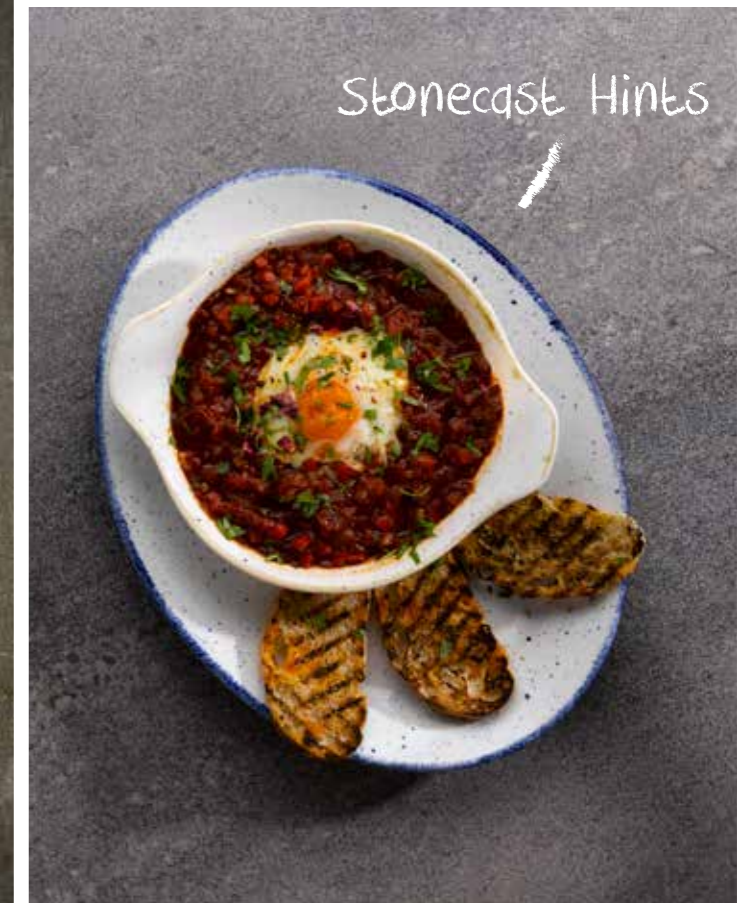
Raku Duo

Stonecast Raw



Items are listed left to right
Raw: SRTETR101, SRTEEV81

Stonecast Hints



Items are listed left to right
Stonecast: SWHSLREN1
Stonecast Hints: SHBID12 1



LUNCH BREAK

A café is more than a coffee shop, it's a workspace and meeting room, a spot for a catch up with friends, a place for club meet ups and more. Lunch is an essential element of a café's offering, from healthy

salad bars to home cooked classics or even grab and go sandwiches bought in from a local deli. Adding colour to tableware enhances the presentation of salads, soups, sandwiches and more.



Café

Chefs' Plates

Items are listed left to right
Chefs' Plate: WH WT271
Café: WH CB111, WH CSS 1



Items are listed left to right
Emerge: EMGYEM161
Homespun Accents: HAJGEV101



Emerge

Homespun Accents



Items are listed left to right
Plume: PLGRWP261, PLULWP261

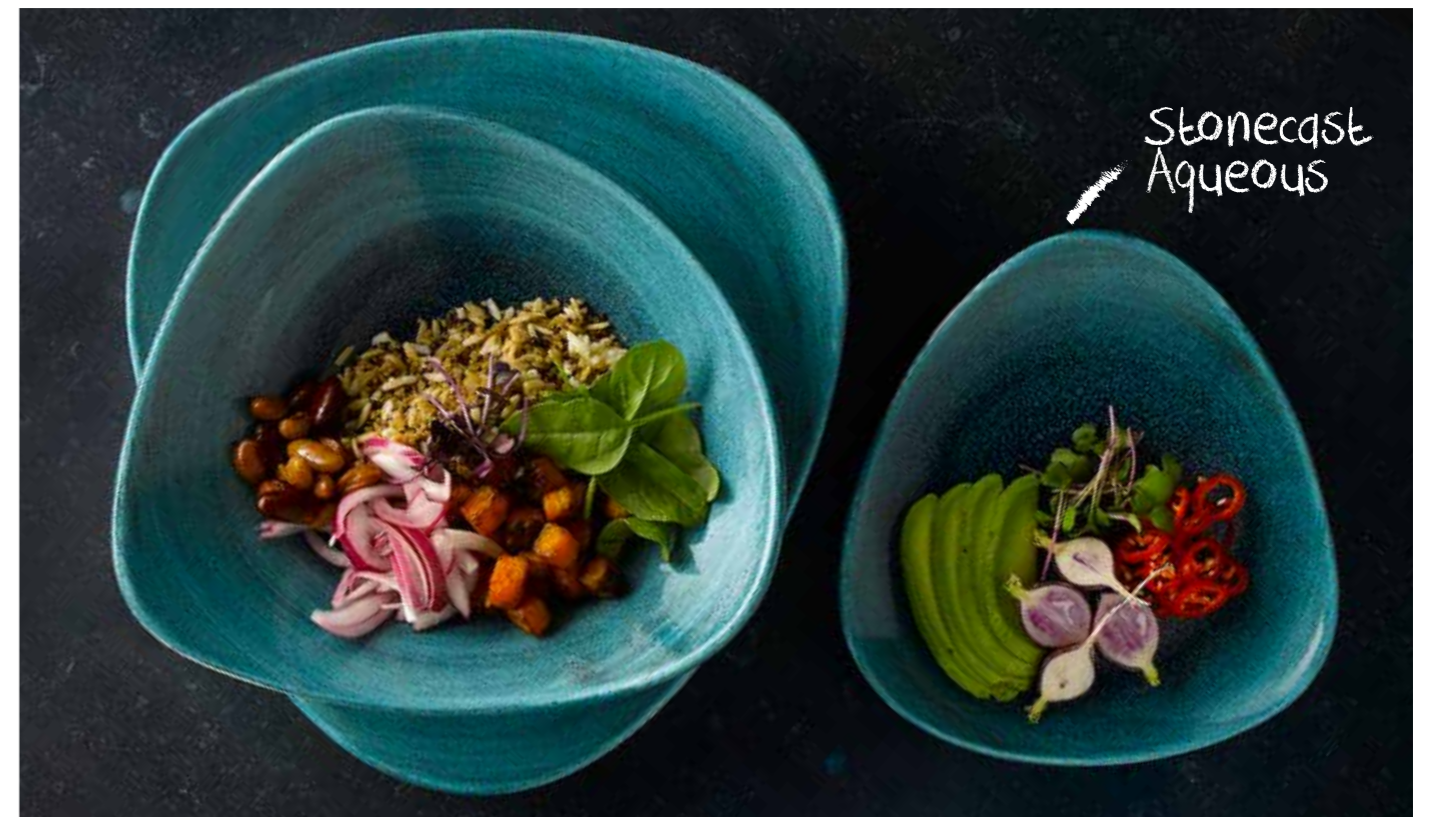
Stonecast Plume

Items are listed left to right
Patina: PATREVB91

ALMOST HALF of Brits eat out FOR LUNCH once a week or more



Stonecast Patina



Stonecast Aqueous

Items are listed left to right
Aqueous: SALGTR101, SALGTRB71, SALGTR7 1

"Healthy lifestyles are a core topic of the moment, and the result sees diners opting for lighter meal choices in cafés rather than the more substantial pub lunch"



Stonecast



Items are listed left to right
Stonecast: SWHSRBL61, SPGRBL61, SSOSRBL61, SDESRL61,
Sola Donau Cutlery: 11DONA026

Items are listed left to right
Haze: HZBLXO141
Nourish: RBBLBSCM1, RBBLBSB21



Studio Prints
Haze

Nourish



Studio Prints
Stone

Items are listed left to right
Stone: STGPEVB91, STGPEV111
Nourish: RBBLBSD41, RBBLBSD21



Chefs' Plates

Items are listed left to right
Chefs' Plates: WH WO341



Stonecast
Raw

Items are listed left to right
Stonecast Raw: SRBREVP61, SRBREVB91



Vintage Prints
Med Tiles

Items are listed left to right
Raku: MTAQEV891



SOMETHING SWEET

Displays of freshly baked pastries and cakes, heaped on coffee shop counters serve to tempt customers into treating themselves to something sweet. Made locally and daily, cafés serve up baked goods just as

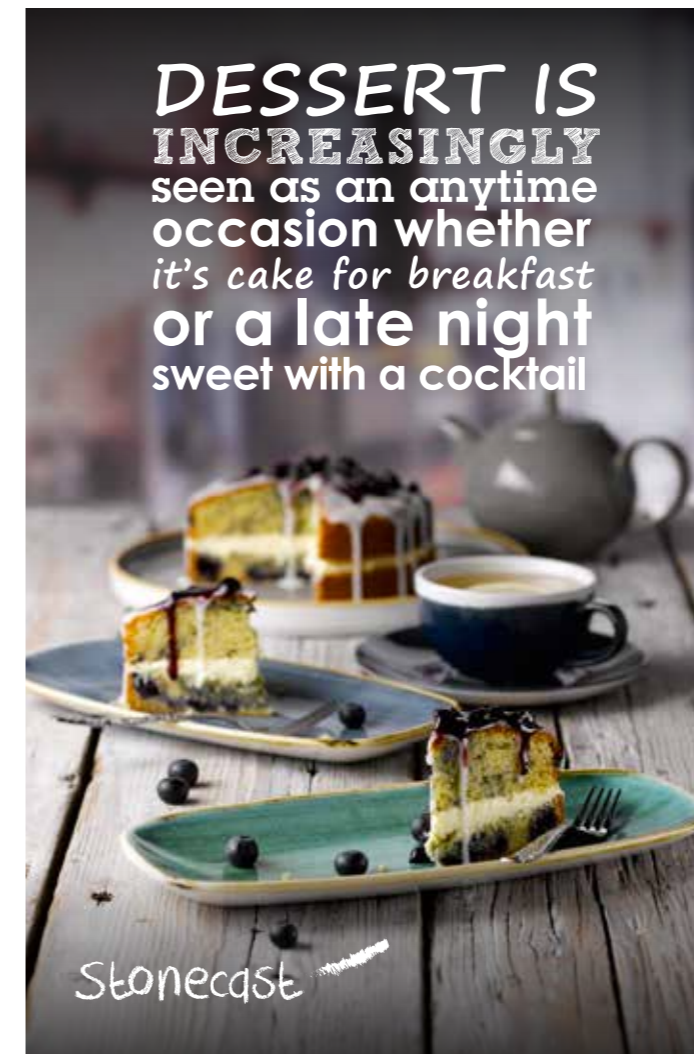
artisan and crafted as their coffee. Special diets are catered for with gluten free and vegan options, and desserts are made a little healthier with natural sugars and sweeteners.



Stonecast Lavender

Items are listed left to right
Stonecast: SLAVTR9 1, SLAVEV101

Items are listed left to right
Stonecast: SBBSXO111, SSGSXO111, SPGSWP261, SPGSSB151
Monochrome: MOBLCB281, MOMBESS 1



DESSERT IS INCREASINGLY seen as an anytime occasion whether it's cake for breakfast or a late night sweet with a cocktail

Stonecast

Items are listed left to right
Patina: PAATCB201, PAATCSS 1
Kintsugi: KTAGEVB91

Items are listed left to right
Isla: RKTBB141, RKTBCB281, RKTBCSS 1



Studio Prints Raku

Items are listed left to right
Chefs' Plates: WH WP281, WH WP161
Monochrome: MOBLCB201, MOMBESS 1



Chefs' Plates



Studio Prints Kintsugi

Items are listed left to right
Patina: PAATCB201, PAATCSS 1
Kintsugi: KTAGEVB91



"Artisan baked goods, colourful and instagrammable desserts or nostalgic classics, all are offered up on the café countertop"

Stonecast



Items are listed left to right
Stonecast: SPGSCB201, SPGSCSS 1, SPGSSB15, SPPSTR9 1, SPGSEVP81, SPGSCB91, SPGSESS 1

Items are listed left to right
Vellum White: WHVMEVP81, WHVMTR7 1, WHVMCB281, WHVMCSS 1



Items are listed left to right
Stonecast: SBBSSJ4 1, SBBSSSGR1, SBBSCB281, SBBSCSS 1, SBBSSWP211

Items are listed left to right
Vintage Prints: TOP VP651, BWL GTC71, CWL GTS 1

—  —

COUNTERTOP DISPLAY

—

Rustic and warm or minimal and fresh, countertop displays form an element of the overall interior design of a café, creating character and adding to the

overall customer experience. Versatile display pieces work across large scale deli set ups or small displays beside a till, creating height and adding colour.



Get the look | Page 29

Get the look | Page 29



Get the look | Page 29

"Countertop displays tempt and entice customers with heaped baked goods, colourful deli displays and fresh salad bars"



VISIT OUR
**CHURCHILL
 SHOWROOM**
 CALL US TO MAKE AN APPOINTMENT
 01782 524517

Items are listed left to right
Wood: ZCAWLWSB1, ZCAWDBH31, ZCAWDBH11, ZCAWDBH21, ZCAWSWSB1
Bit on the side: BCBRRPCM1, BCBRRPD41

Get the Look

Recreate all of the images featured in the countertop section using the products listed here. Items are listed from the back, left to right.



ZPL STTB1 - Stonecast Barley White Melamine Trace Bowl x 2
 ZPL STMB1 - Stonecast Barley White Melamine Moonstone Buffet Bowl x 1
 SWHSVB141 - Stonecast Barley White Stacking Bowl x 2
 SPGSVB141 - Stonecast Peppercorn Grey Stacking Bowl x 1
 SWHWP161 - Stonecast Barley Chefs' Walled Plate x 3
 SWHSZE121 - Stonecast Barley Zest Bowl x 4
 ZCAWLGST1 - Buffetscape Large Organic Stand x 1
 ZCAWSRST1 - Buffetscape Small Round Stand x 1



SHWHAC141 - Stonecast Hints Barley White Buffet Bowl x 1
 ZCAWLRST1 - Buffetscape Large Round Stand x 1
 SHBIAC141 - Stonecast Hints Indigo Blue Buffet Bowl x 1
 ZCAWSSCR1 - Buffetscape Small Stacking Crate Riser x 5
 BCPEPL121 - Bit On The Side Pebble Plant Pot x 10
 ZCAWLRRCR1 - Buffetscape Large Stacking Crate Riser x 3
 SHWHAST1 - Stonecast Hints Barley White Square Buffet Tray x 1
 SPGSEVP81 - Stonecast Peppercorn Grey Coupe Plate x 8
 SCFSPLC21 - Stonecast Cornflower Blue Coupe Bowl x 1
 SPGSCEB91 - Stonecast Peppercorn Grey Espresso Cup x 6
 SHWHART1 - Stonecast Barley White Rectangular Buffet Tray x 1
 ZPL HPG1 - Granite Melamine Handled Paddle Board x 2
 ZPL HPW1 - Melamine White Handled Paddle Board x 1



SPGSEVB91 - Stonecast Peppercorn Grey Coupe Bowl x 1
 ZCAWLRST1 - Buffetscape Large Round Stand x 1
 SPGSTRB91 - Stonecast Peppercorn Grey Triangle Bowl x 2
 ZCAWSRST1 - Buffetscape Small Round Stand x 1
 ZCAWLRRCR1 - Buffetscape Large Stacking Crate Riser x 4
 ZCAWSSCR1 - Buffetscape Small Stacking Crate Riser x 5
 ZPL MRG21 - Granite Melamine Rectangular Buffet Tray x 1
 ZPL MRG31 - Granite Melamine Rectangular Buffet Tray x 1
 SPGSEVP81 - Stonecast Peppercorn Grey Plate x 7
 SPGSZE121 - Stonecast Peppercorn Grey Zest Bowl x 6
 ZCAWTBPP1 - Buffetscape 3 Bowl Presentation Platform x 2
 ZPL HPG1 - Granite Melamine Handled Paddle Board x 3
 ZPL MSTG1 - Granite Melamine Square Buffet Tray x 1
 SPCBXO111 - Studio Prints Homespun Charcoal Chefs' Oblong Plate No.3 x 2
 SPCBSSGR1 - Studio Prints Homespun Charcoal Sugar Bowl x 1
 ZPL MRTG1 - Granite Melamine Rectangular Tray x 1

COME AND SEE OUR
FULL COLLECTION



Stoke Showroom

No.1 Marlborough Way,
Tunstall, Stoke-on-Trent,
ST6 5NZ, England

London Showroom

Business Design Centre,
Suite 102, 52 Upper Street,
Islington, London, N1 0QH

To arrange a visit to our Stoke showroom please contact:

Tel: +44 (0) 1782 577566

Email: info@churchill1795.com

Follow us

f [churchill1795](#)

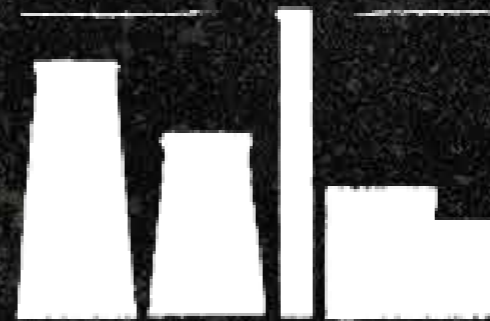
t [@churchill1795](#)

i [@churchill_1795](#)

WHY CHURCHILL?

INNOVATIVE
— NEW PRODUCT —
LAUNCHES

OVER
7 MILLION
PIECES
IN STOCK



DURABLE
PRODUCTS

EXTENSIVE
INDUSTRY
RESEARCH

BUILT TO LAST IN
A BUSY HOSPITALITY
KITCHEN

OVER
3700
PRODUCTS

IN OUR PORTFOLIO



CHURCHILL®

churchill1795.com

f Churchill1795

@churchill1795

@Churchill_1795

Tel: +44 (0) 1782 577 566

Fax: +44 (0) 1782 524 355

email: info@churchill1795.com

HEAD OFFICE

& STOKE SHOWROOM

No. 1 Marlborough Way
Tunstall
Stoke-on-Trent
ST6 5NZ

BERLIN SHOWROOM

Rankestraße 8
10789
Berlin
Germany

LONDON SHOWROOM

Business Design Centre
Suite 102
52 Upper Street
Islington
London
N1 0QH

MADRID SHOWROOM

Calle Princesa No 2
7ta Planta
Puertas 4 y 5
Madrid 28008
España
Tel: 910 004 929



In the printing of this brochure, every effort has been made to ensure perfect reproduction of product colours, but due to printing limitations, they may not be an exact match to the actual product.